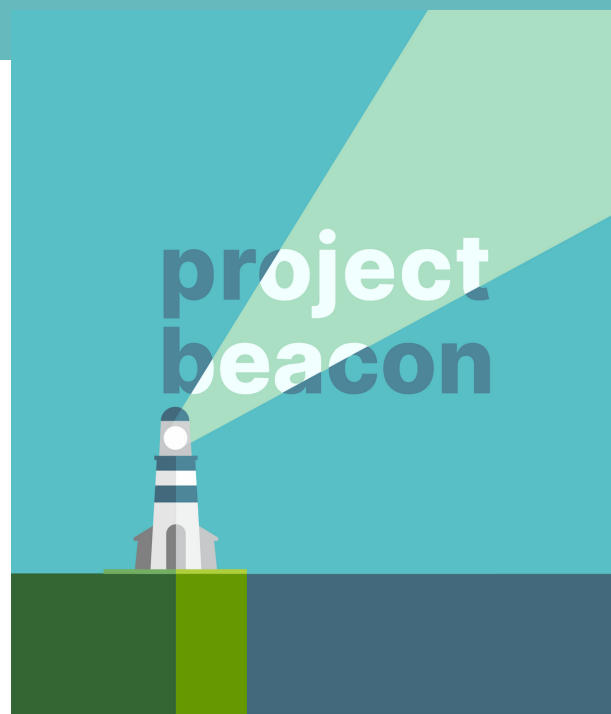


# What's New PROJECT BEACON

All of us on the Project Beacon Board of Directors hope you and those you hold dear are safe and well. We are incredibly grateful for interest in our work, for your offers to help, and yes, for your financial support. We are off to a strong start and I wanted to take a few minutes to give you an update on what we have been doing these last several months as we work toward realizing our vision of a safe, caring residential and vocational community for neurodiverse adults. As always, we all are available to you if you have questions or want more information.

Kelly Baughman,  
President & Co-Founder



## **New Partnership with Players Philanthropy!**



We have finalized our partnership with Players Philanthropy Fund (PPF) as our umbrella 501(c)(3) organization, which means that all donations to Project Beacon are fully tax deductible as allowed under federal law. Our partnership with PPF gives us strong organizational support during these early days and enables us to build bench strength while we work to get Project Beacon going. Over the longer term we intend to establish Project Beacon as an independent 501(c)(3), but PPF is a great partner to have during this start-up phase. You can learn more about PPF [here](#), and can make an online donation to Project Beacon [here](#). If you have a donor-advised fund, you can also support Project Beacon by making a donation to PPF and asking your fund to note that the donation is for the benefit of Project Beacon. Several donors have made donations to us in this manner, and it has worked quite smoothly!



## **Welcome Cindy!**

The Board met in July and added Cindy Melton as our 5th Board member. Cindy is Chief Operating Officer of the Rice University Management Company, and brings strong business acumen as well as a caring heart to our work. We are thrilled to have her join us. [Read Cindy's bio](#)

We are exploring several ideas for vocational and revenue-generating opportunities since it's important to us that we (1) offer programs for the people we want to serve; and (2) we aren't solely relying on donations to support us. To that end, we have been in contact with Freight Farms, a unique, container-based farming venture that would permit us to grow high-quality, organic produce that can then be sold to restaurants, food distributors, retail outlets. We have met with Freight Farms and with other non-profits who are working with Freight Farms, and our goal is to complete our due diligence and come to a decision by year-end 2021.

## **Work, Work, Work!**



## **Getting Connected**

We have been meeting with a variety of non-profit and business leaders as we work to more fully develop our business planning, marketing, and outreach efforts. It's really been gratifying to see how interested these leaders have been in supporting Project Beacon. It's a fact that fundraising will be critical to our success and we want to tell our story and share our vision in the most effective ways. If you'd like to help us in these areas [please just let us know!](#)

## **The 4th Quarter Sprint**

Some of our objectives include identifying people who are interested in serving on our board and our planned Advisory Council, continued benchmarking other projects with goals similar to ours to identify best practices and lessons learned, and continued outreach to and engagement with community and government leaders as we seek to obtain additional information on grant opportunities, permitting and other requirements, and areas where they can support our work.

As you can see, we have been busy and we are committed to Project Beacon's success. If you'd like to help us out in areas such as marketing, fundraising, and grant writing, helping us with our due diligence on vocational programming, reaching out to parents and others who may be interested in our work, or in any number of areas please just let us know. You can contact us via our [website](#), on [Facebook](#), or you can send us an [email](#).

In closing, I again want to thank you for your interest in and support of Project Beacon. Our work would not be possible if it was not for each one of you. THANK YOU!!!!

Please do share this update with anyone you feel would be interested in Project Beacon.

With deepest gratitude,

Kelly Baughman,  
President & Co-Founder of Project Beacon

Thank You